

Version 1.04

(01.06.2017)

# Installation manual

## Complete set active Sound incl. Soundbooster

### Seat Leon 5F

Artikel ID      40502  
                     40502-1



---

## Content

General advice .....	2
Safety Instructions .....	3
References of legal regulations for operation .....	3
Notes .....	4
Scope of delivery 40502 and 40502-1 .....	4
Installation instruction .....	5
Mounting and connection of the external sound generator – Seat Leon Coupe – Item no. 40502.....	9
Mounting and connection of the external sound generator – Seat Leon Combi – Item no. 40502-1 .....	12

## General advice

While developing this product, your personal safety combined with the best operating service, modern design and an up-to-date production technique was especially taken into account.

Unfortunately, despite the utmost care injuries and/or damages might occur due to improper installation and/or use.

Please read the attached instruction manual completely with great care and keep it!

All articles of our production line pass through a 100 % check - for your safety and security.

We reserve the right to carry out technical changes which serve the improvement at any time.

According to each article and purpose, it is sometimes necessary to check each country's legal regulations before installing and starting the unit.

In case of guarantee claims, the device has to be sent back to the seller in the original packaging with the attached bill of purchase and detailed defect's description. Please pay attention to the manufacturer's return

requirements (RMA). The legal warranty directions are valid.

The guarantee claim as well as the operating permission becomes invalid due to:

- a) unauthorized changes to the device or accessories which have not been approved or carried out by the manufacturer or its partners*
- b) opening the device's frame*
- c) device's repairs carried out by one's own*
- d) improper use / operation*
- e) brute force to the device (drop, wilful damage, accident etc.)*

During installation, please pay attention to all safety relevant and legal directions. The device has only to be installed by trained personnel or similarly qualified people.

**Please limit on installation or function problems the troubleshooting to 0.5 hours for mechanical and 1.0 hours for electronic works.**

To avoid unnecessary work and to save costs, please send us immediately via the contact form Kufatec (<http://www.kufatec.de/shop/de/infocenter/>) a request to our technical support.

Please quote the following necessarily:

- Vehicle Identification Number
- Part number of the retrofit kit
- Detailed description of problems
- Already conducted operations

## Safety Instructions

Installation requires special knowledge.

Do not install the unit yourself. For safe and reliable installation, consult a dealer having special knowledge.

- *Never use bolts or nuts from the car's safety devices for installation. If bolts or nuts from the steering wheel, brakes or other safety devices are used for installation of the unit, it may cause an accident.*
- *Use the unit with a DC 12V negative ground car. This unit cannot be used in large trucks which use a DC 24V battery. If it is used with a DC 24V battery, it may cause a fire or accident.*
- *Avoid installing the unit in following places: - Where it would hinder your safe driving. - Where it could damage the car's fittings.*
- *This unit is only for use in the following vehicles. Only connections described within this instruction guide are allowed or required to use for installation.*
- *For damage impact caused by faulty installation, unsuitable connections in appropriate vehicles Kufatec GmbH assumes no liability.*
- *We advise you that these units process data out of the MOST - protocol from the vehicle. As the supplier of this device we don't know the overall system you are working with. If our device causes damage due to other changes made by to the vehicle Kufatec GmbH assumes no liability.*
- *Kufatec GmbH supplier do not guaranty the use of the product for changing's within a new vehicle series.*
- *If the car manufacturer's don't agree with the installation of our device by reason of warranty the Kufatec GmbH assumes no liability. Please check conditions and warranty before you begin the installation.*
- *Kufatec GmbH supplier reserves the right to change the device specifications without notice.*

**NOTE:** The road traffic has to have your full attention.

Telephone operations should only be done by suitable traffic and weather situations. The volume need to be set that you are still able to realise acoustic warn signals (Police, fire brigade).

- *Errors and changes excepted.*

## References of legal regulations for operation

Only use this unit in the intended domain.

If you use it in a foreign domain, if the unit is not installed properly, or if the unit will be reconstructed, the guarantee will expire.

## Notes

**Note:** The use of a sound booster is not permitted without registration in the vehicle papers, in the area of the german StVZO. The noise emission of the vehicle is increased by this retrofit. The regulations of the StVZO must be observed. It is therefore recommended to ask for a specific registration option at the responsible TÜV/DEKRA office before retrofitting. Outside Germany, please observe the laws on vehicle licensing applicable in your country.

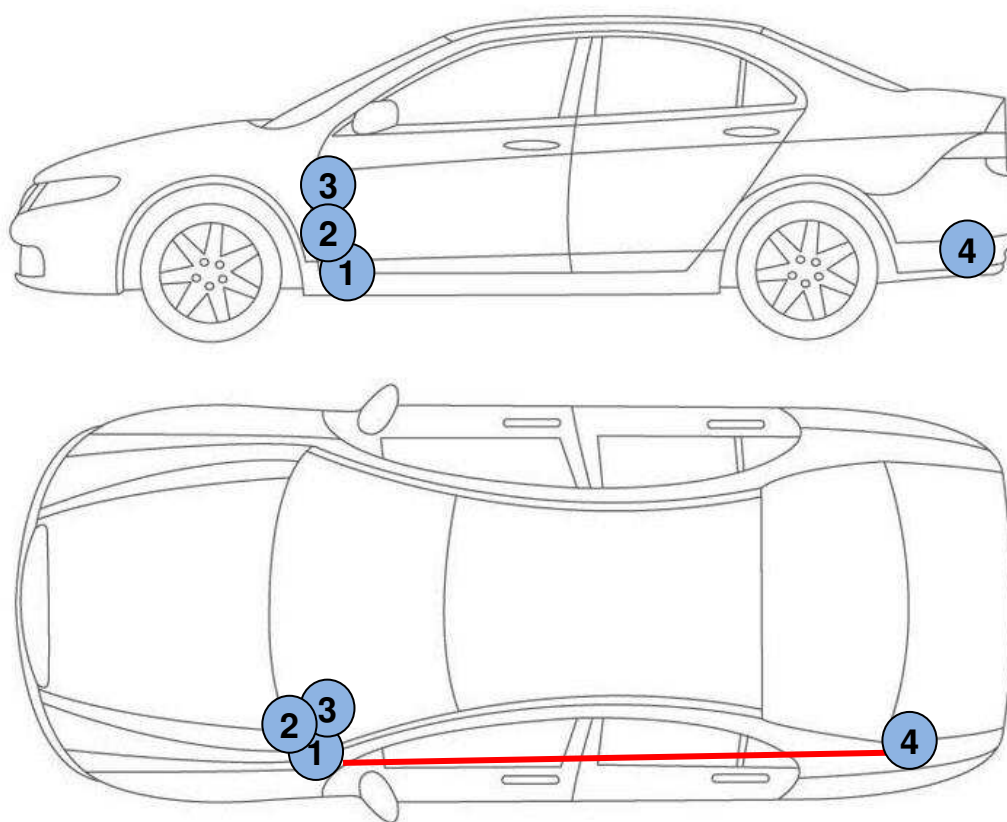
**Note:** At first please check if the sound generator can be installed at the described position. If there is no space please interrupt the installation and contact our technical support. Don't continue with this installation, until this issue is clarified.

## Scope of delivery 40502 and 40502-1

- Control unit for engine sound generation
- External sound generator incl. mounting plate
- Sound Booster Pro (modul)
- Wiring set

## Installation instruction

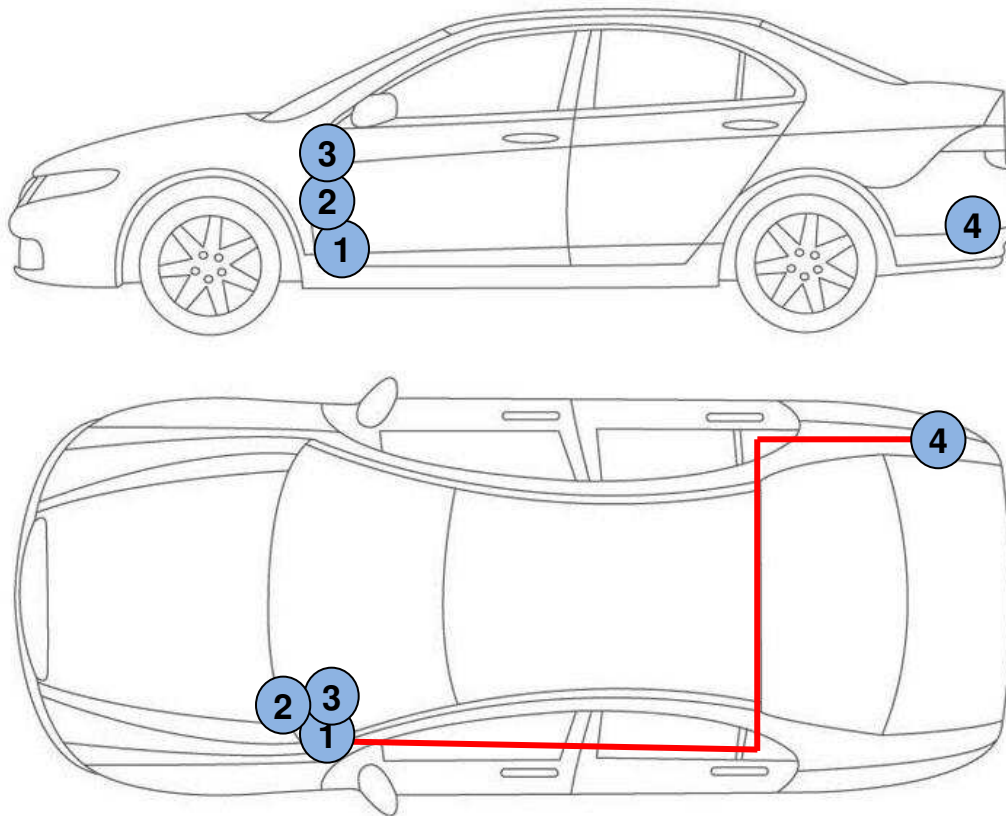
The diagram below shows the wiring and the position of the individual components, item no. 40502.



Scheme

- 1 – Sound Booster Pro-Modul**
- 2 – Control unit**
- 3 – Button**
- 4 – External sound generator**

The diagram below shows the wiring and the position of the individual components, item no. 40502-1.



Scheme

- 1 – Sound Booster Pro-Modul**
- 2 - Steuergerät**
- 3 – Taster**
- 4 – Außengeräuscherzeuger**



First dismantle the release handle of the bonnet, therefore remove the securing clip from the handle, Fig. 1. Remove the lining of the A-column and the kicking plate at driver's side. The lining is clicked and can be removed by using a plastic wedge, Fig. 1. Remove the back seat as well.



Fig. 1

In the driver's footspace unplug the 17-pin connector (beige), Fig. 2. Connect the CAN cables as mentioned below and plug in the 17-pin connector.

<b>CAN High (black/white)</b>	-	<b>Pin 1 (orange/black)</b>
<b>CAN Low (black/yellow)</b>	-	<b>Pin 2 (orange/brown)</b>
<b>Hinweis: Take care of the a.m. cable colours. The pin numbers can vary! Finally, the connection points must be insulated.</b>		

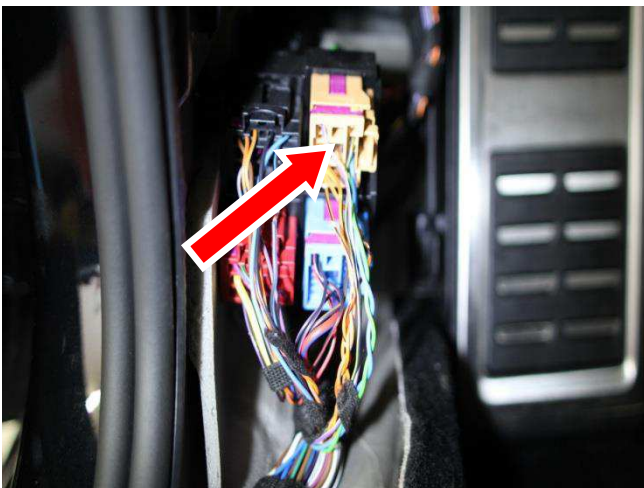


Fig. 2

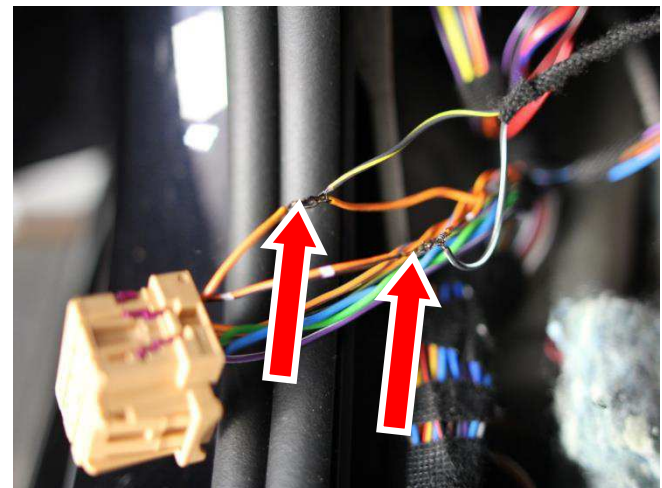


Fig. 3



Connect the cable for ignition lead (red/white) with fuse no. 48, Fig. 4. Secure the line with a 7,5A fuse. Pls. check this connection by measuring the voltage!

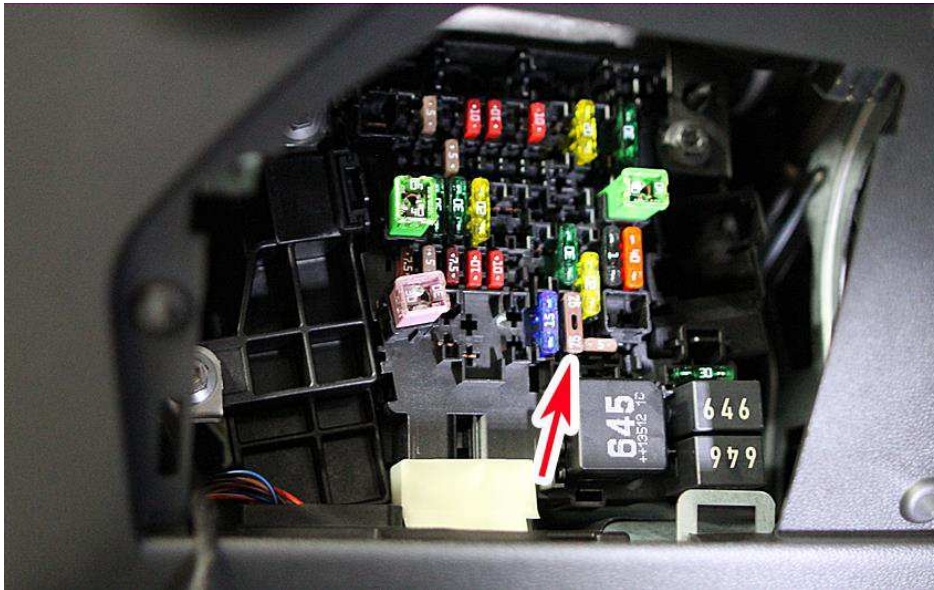


Fig. 4

Now connect the cable for ground (brown). A suitable ground point is located at the A-column on the left, Fig. 5.

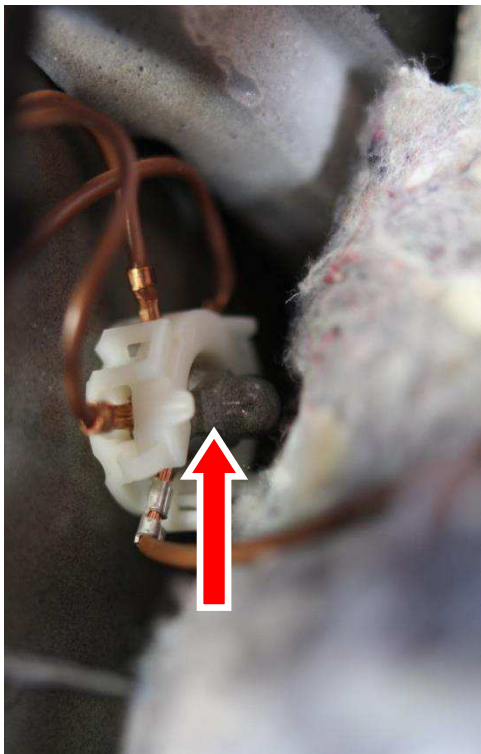


Fig. 5

Connect the control unit and the Sound Booster Pro module and mount them at the A-column with fixing materials as shown in Fig. 6.



Fig. 6

## Mounting and connection of the external sound generator – Seat Leon Coupe – Item no. 40502

Continue with laying the wires to the back of the car. Pull the wires through the rubber cable inlet to the outside of the left rear wheelhousing, Fig. 7. Seal the cable inlet. Lay the cables along the break line, Fig. 8.

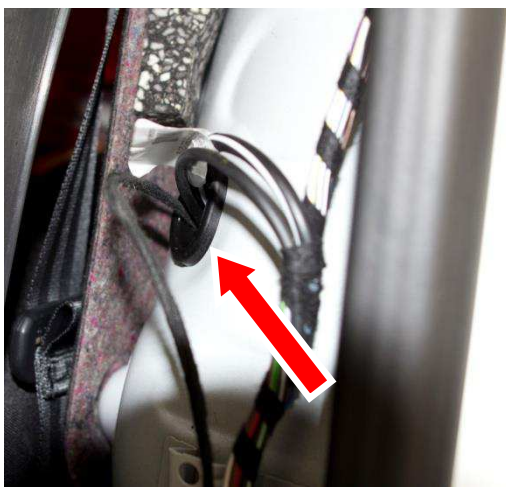


Fig. 7



Fig. 8



Take an angle grinder and cut the exhaust pipe as mentioned below, Fig. 9 and Fig. 10.

**ATTENTION:** Cut the exhaust pipe 30cm behind the first curve!



Fig. 9

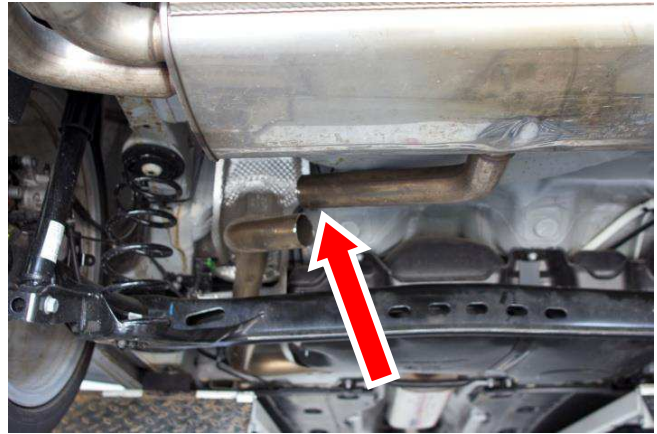


Fig. 10

Place the external sound generator, adjust the position and fix it by tighten the screws of the clamp, Fig. 11 and Fig. 12.



Fig. 11

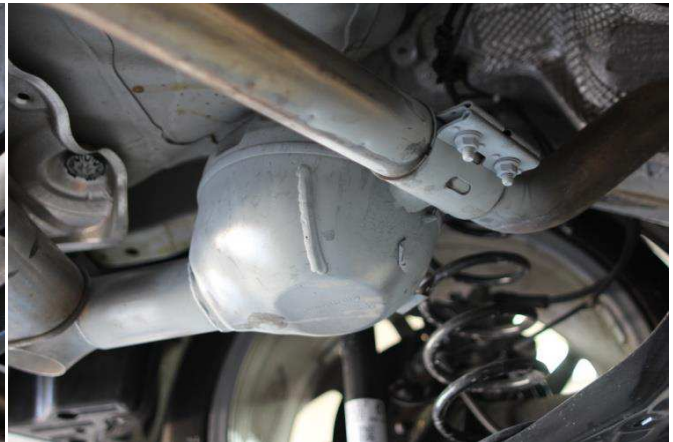


Fig. 12

Continue with laying the wires to the external sound generator and connect them. Make sure that the wires will not be clamped or damaged.



## Mounting and connection of the external sound generator – Seat Leon Combi – Item no. 40502-1

Continue with laying the wires to the back seat of the car, Fig. 13 and 14.



Fig. 13

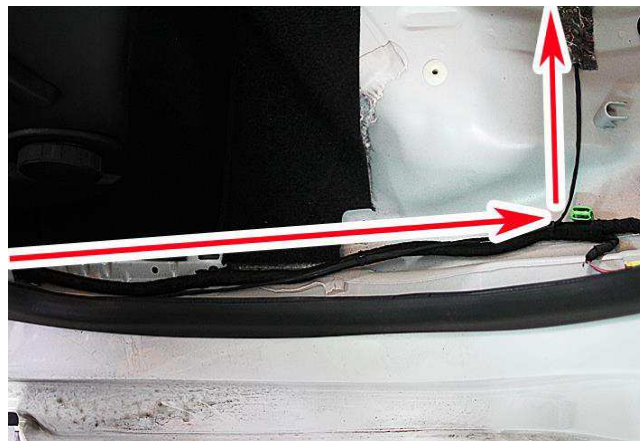


Fig. 14

Lay the wiring underneath the back seat to the right (Fig. 15) and via the wheelhouse (use a pulling through aid) into the luggage compartment, Fig. 16.

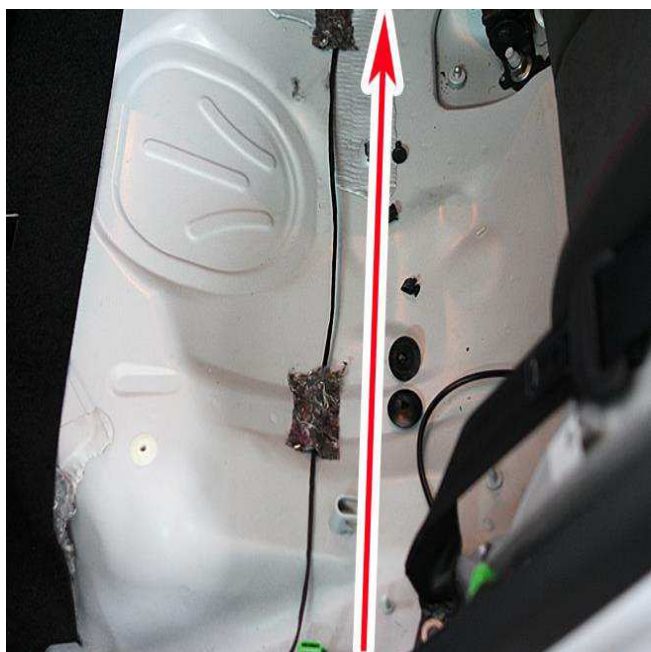


Fig. 15



Fig. 16

The laying to the external sound generator, pls. refer to Fig. 17 and 18. The panel underneath the car must be removed before. Pull the wires through the rubber cable outlet. Ensure a waterproof sealing.



Fig. 17



Fig. 18

Mount the external sound generator rear left at the bracket of the luggage compartment floor, Fig. 19. and 20 and connect the cable to the external sound generator.



Fig. 19



Fig. 20

As an additional safeguard the included steel cable and associated clip must be attached to the sound generator and at a suitable location on the vehicle. This is an additional security, in case of losing the fixing screw by vibrations.

For attaching the sound generator use suitable screws which can withstand a high load. To avoid losing the screws by vibrations, secure the screws with suitable workshop material. Check periodically the stability of the noise generator and tighten the screws if necessary. In the case of a non-compliance, we assume no liability for any damages.

We suggest to install this push button underneath the dashboard, Fig. 21, for example inside the storage compartment.

**ATTENTION:** For drilling you need a 7mm drill!



Fig. 21

The re-assembly takes place appropriately in a backward sequence.

You can choose 6 profiles by using the supplied button - in level 1-3 you will hear a decent sound, in level 4-6 a powerful V6/V8 sound.